

SKYES-ONE DEPARTURE (SKYES 1 • SKYES)

SHL-348 [USAF]

MARCH ARB (KRIV)

RIVERSIDE, CALIFORNIA

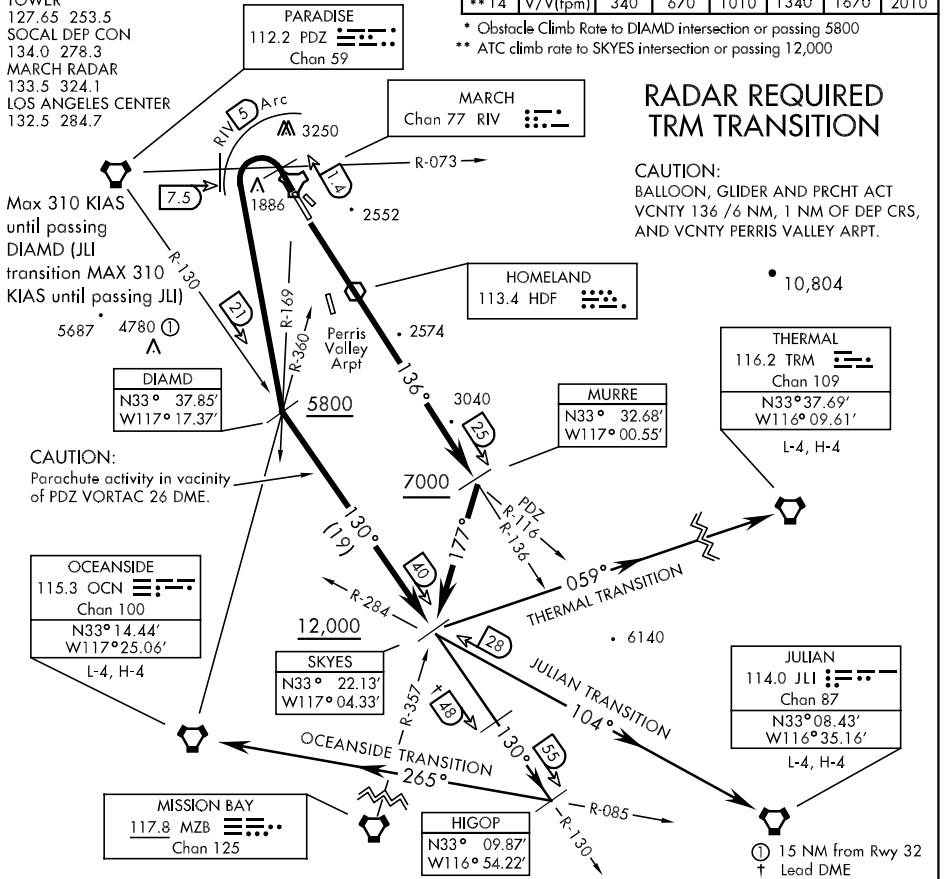
ATIS 134.75 239.05
 GND CON/CLNC DEL
 121.75 335.8
 TOWER
 127.65 253.5
 SOCIAL DEP CON
 134.0 278.3
 MARCH RADAR
 133.5 324.1
 LOS ANGELES CENTER
 132.5 284.7

Rwy	Knots	60	120	180	240	300	360
* 32	V/V(fpm)	250	500	750	1000	1250	1500
** 32	V/V(fpm)	310	620	920	1230	1530	1840
** 14	V/V(fpm)	340	670	1010	1340	1670	2010

- * Obstacle Climb Rate to DIAMD intersection or passing 5800
- ** ATC climb rate to SKYES intersection or passing 12,000

RADAR REQUIRED TRM TRANSITION

CAUTION:
 BALLOON, GLIDER AND PRCHT ACT
 VCNTY 136 /6 NM, 1 NM OF DEP CRS,
 AND VCNTY PERRIS VALLEY ARPT.



SW-3, 01 JUL 2010 to 29 JUL 2010

SW-3, 01 JUL 2010 to 29 JUL 2010

DEPARTURE ROUTE DESCRIPTION

TAKE-OFF RWY 14: Climb via RIV TACAN R-136 or climb direct HDF VOR, then via HDF R-136 to MURRE, intercept MZB VORTAC R-357 to SKYES, Cross MURRE at or above 7000, and SKYES at or above 12,000. Thence via transition or assigned route.

TAKE-OFF RWY 32: Climb on track 315°, then turn left crossing PDZ VORTAC R-073/RIV TACAN 1.4 DME direct DIAMD, proceed no closer than 7.5 DME PDZ. Remain within 5 DME RIV. Cross DIAMD at or above 5800. Intercept PDZ R-130 to SKYES, cross SKYES at or above 12,000. Thence via transition or assigned route.

JULIAN TRANSITION (SKYES 1 • JLI): JLI VORTAC R-284 direct JLI. MAX 310 KIAS until passing JULIAN VORTAC

OCEANSIDE TRANSITION (SKYES 1 • OCN): Via SKYES direct HIGOP intercept OCN VORTAC R-085 to OCN.

THERMAL TRANSITION (SKYES 1 • TRM): TRM VORTAC bearing 059° to TRM (Radar required)

SKYES-ONE DEPARTURE (SKYES 1 • SKYES)

RIVERSIDE, CALIFORNIA

MARCH ARB (KRIV)